

# SAFETY AND SCHOOL ENVIRONMENT

## Non-CSAP Course Offerings

Your School Offers	does	does not
• art.....	<input checked="" type="checkbox"/>	<input type="checkbox"/>
• drama or theater.....	<input type="checkbox"/>	<input checked="" type="checkbox"/>
• music.....	<input checked="" type="checkbox"/>	<input type="checkbox"/>
• physical education.....	<input checked="" type="checkbox"/>	<input type="checkbox"/>
• opportunity for civic or community engagement.....	<input checked="" type="checkbox"/>	<input type="checkbox"/>
• internet safety program.....	<input checked="" type="checkbox"/>	<input type="checkbox"/>
• International Baccalaureate.....	<input type="checkbox"/>	<input checked="" type="checkbox"/>
• extracurricular activities.....	<input checked="" type="checkbox"/>	<input type="checkbox"/>
• athletics.....	<input checked="" type="checkbox"/>	<input type="checkbox"/>
• career and technical education.....	<input checked="" type="checkbox"/>	<input type="checkbox"/>
• honors.....	<input type="checkbox"/>	<input checked="" type="checkbox"/>

## Safety and Discipline

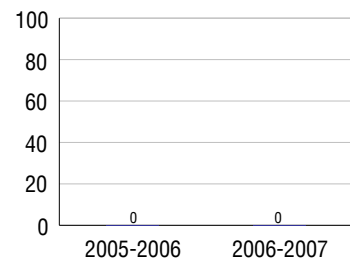
Safe schools are a top priority for parents, teachers, and communities. Your school safety and discipline record for the 2007-2008 school year is:

Type of Incident	Number of Incidents Reported	Percent of Total Incidents
Substance Abuse - Drugs	1	33.3%
Substance Abuse - Alcohol		
Substance Abuse - Tobacco		
Felony Assaults		
Fights	1	33.3%
Possession of Dangerous Weapons		
Other Violations Code of Conduct	1	33.3%

## Student Attendance and School Calendar

2007-2008	Your School
Enrollment	80
Average Daily Attendance	77
Student Dropouts	0.0%

## Dropout Rate



## Student Information Over Time

	2005-2006	2006-2007	2007-2008
Student Enrollment Stability	97%	93.8%	97.5%
Students Eligible for Free and Reduced Lunch	45.5 %	52.5 %	58.8 %

For more information and further details about this report, visit [www.state.co.us/schools](http://www.state.co.us/schools)  
Colorado Department of Education, 201 East Colfax Ave. Denver, CO 80203

Simla Junior High School  
0940/7918/M  
619 Pueblo St. Simla, CO 80835 . 719-541-2291  
10/20/2008

# DISTRICT TAXPAYER'S REPORT

Sources of School District Revenue	2007	District Source of Funds 2007
Local Tax Contribution	\$466,264	
State Tax Contribution	2,204,407	
Federal Grants	215,400	
State Grants	364,977	
Private/Partnership Grants	0	
Other Discretionary Income	372,689	
<b>Total District Operating Revenue</b>	<b>\$3,623,737</b>	
Long Term Debt Proceeds	0	
<b>Total District Revenue</b>	<b>\$3,623,737</b>	
<b>Total District Operating Revenue Per Pupil =</b>	<b>\$12,019</b>	
<b>Total District Revenue Per Pupil (Including Long Term Debt) =</b>	<b>\$12,019</b>	
<b>District Per Pupil Operating Revenue =</b>	<b>\$8,519</b>	
<b>State Average Per Pupil Operating Revenue =</b>	<b>\$6,080</b>	

District Use of Funds	2007	District Use of Funds 2007
Instructional & Instructional Support	\$2,249,948	
Administration	301,656	
Building & Facilities Maintenance	336,686	
Operational Expenditures	281,507	
Debt Service	149,058	
Other Expenditures	109,416	
<b>Total District Operating Expenditures</b>	<b>\$3,428,271</b>	
Capital Expenditures	544,871	
<b>Total District Use of Funds</b>	<b>\$3,973,142</b>	

## District Debt and Capital Construction & Equipment

Total Outstanding Bonded Debt	\$0
Average Annual Percentage Interest Rate on Debt	4.7%
Amount Raised from Most Recent Bond	\$600,000
Amount Spent on New Buildings During Last 2 Years	\$509,216

## Accreditation

Accreditation is Colorado's primary accountability system, incorporating achievement levels, academic growth, achievement gaps, post-secondary readiness, improvement planning, and compliance. The state accredits districts and districts accredit individual schools.

District Accreditation Status for the 2007-2008 school year:

## Voter Approved Funding Changes

Your community did  /did not  hold an election in November 2006

The following items have been approved by voters:

TABOR Override

Bond

Mill Levy Increase

# SIMLA JUNIOR HIGH SCHOOL



**BIG SANDY 100J**

<http://bigsandy.ppboces.org>

## School Accountability Report 2007-2008 School Year

### School Performance Summary

**Overall Academic Performance on State Assessments** **Average**

**Academic Growth of Students** **Typical**

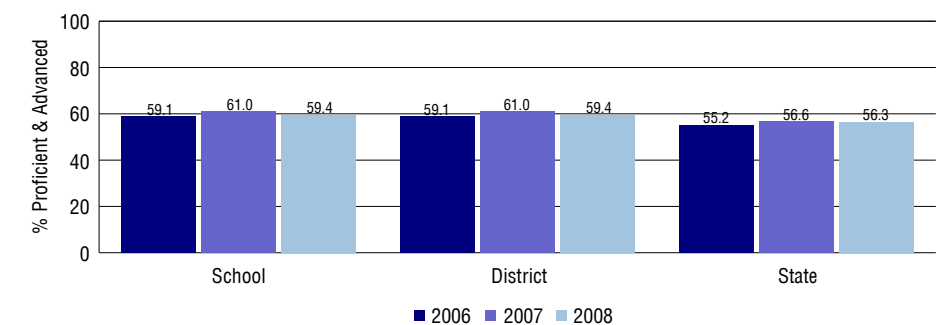
### Overall Academic Performance on State Assessments

Each school in the State received a rating of "Excellent", "High", "Average", "Low", or "Unsatisfactory" for student academic performance based on 2007-2008 CSAP and COACT results. The rating is calculated using weighted percentages of each CSAP proficiency level for all content area and grade results for the school, as well as average COACT Reading, Writing, and Math Grade 11 results.

### Academic Growth of Students

Each school in the State received a rating of "Low", "Typical", or "High" for student academic growth based on CSAP results. The calculation method is new for 2007-2008. The rating is calculated using student percentile scores matched over two years. More information about the Overall Academic Performance rating and Academic Growth of Students calculations can be found here: [http://www.cde.state.co.us/cdeassess/SAR\\_Info.html](http://www.cde.state.co.us/cdeassess/SAR_Info.html).

### Percent Proficient and Advanced for Middle Grades for All Content Areas



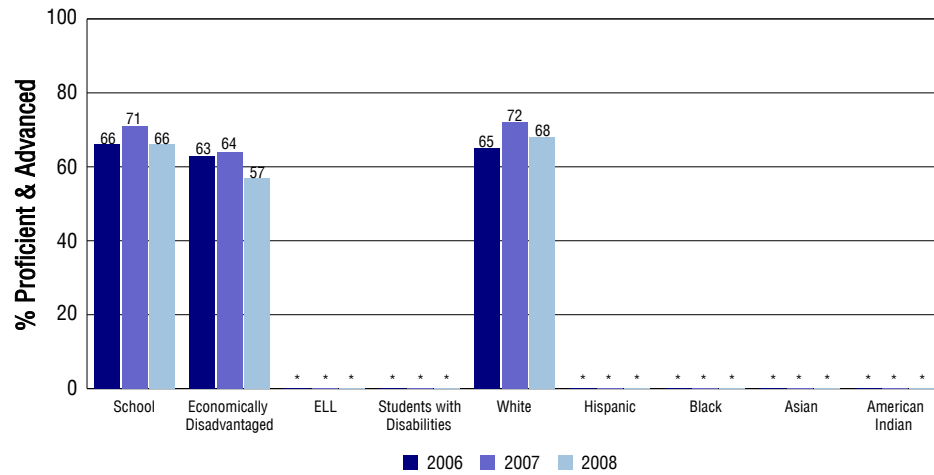
### Student Test Scores Used For Calculating Overall Academic Performance

98.4%	Test Scores Counted
0.0%	Test Scores not used due to Language
1.6%	Test Scores not used due to New Student

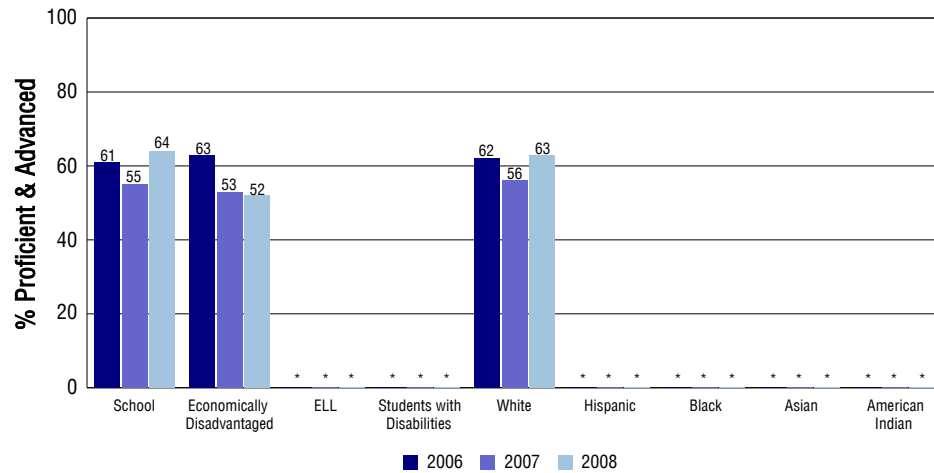
## STUDENT PERFORMANCE

These graphs show the percent Proficient and Advanced trends over the past three years for Reading, Writing, and Math. Results are presented for the entire school for all reported grades as well as for different subgroups. Note: \* indicates any group with less than 16 student results to be reported.

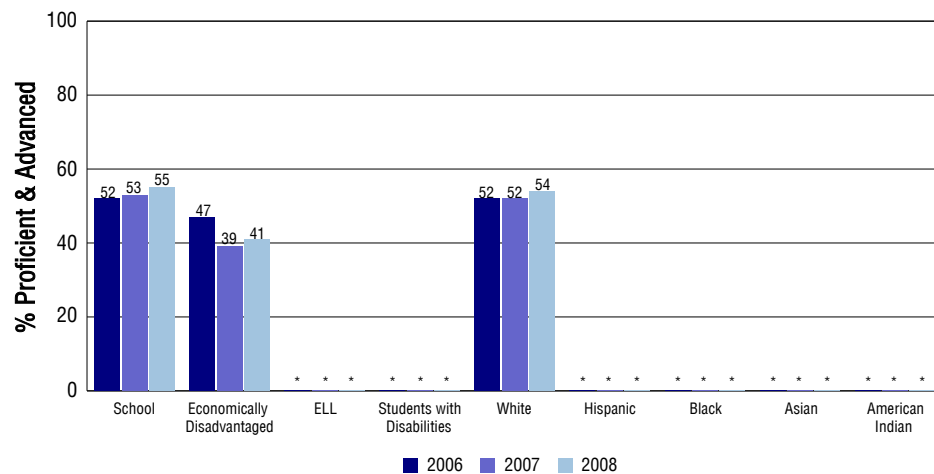
### Reading



### Writing



### Math



## SCHOOL INFORMATION

### School Pride (as submitted by your district)

- One hundred percent of Big Sandy School's teachers are highly qualified.
- Big Sandy School strives for a rich/rigorous academic curriculum.
- Big Sandy School offers small class sizes within core areas of the curriculum.
- Big Sandy School has a caring environment conducive to increased student motivation and student achievement.

### School Goals (as submitted by your district)

Maintain an attendance rate of 95%. Continue to make academic progress for all students as documented by CSAP, ITBS, the Governor's Report Card, and NCLB adequate yearly progress. Student learning is our highest priority. Time on task, organization, respo

### No Child Left Behind - Adequate Yearly Progress

Did your school make AYP in reading?	Yes	Math?	Yes
How many targets does your school have?	18	Met?	18

Based on this school's academic performance, your child may be eligible for one or more of the following; ask your school if your child qualifies for:

Extra academic instruction either before or after-school, or in the summer  
Mentoring

For additional information regarding Adequate Yearly Progress please visit  
<http://www.cde.state.co.us/FedPrograms/ayp/index.asp>

### How Simla Junior High School Compares To Middle Schools Within A 75-Mile Radius

School	Program Type	Academic Performance	Academic Growth
Frontier Charter Academy(1)	Charter	Unreportable	Unreportable
Calhan Middle School(1)		High	Typical
Miami-Yoder Junior High School(2)		Average	Typical
Peyton Middle School(3)		High	High
Limon Junior-Senior High School(4)		High	High
Agate Junior-Senior High School(5)		Average	No Rating
Kiowa Middle School(6)		High	Typical
Elbert Junior-Senior High School(7)		High	Typical
Ellicott Middle School(8)		Average	Typical
Falcon Middle School(9)		Average	Low

1 Located in Calhan Rj-1 School District.  
2 Located in Miami/Yoder 60 Jt School District.  
3 Located in Peyton 23 Jt School District.  
4 Located in Limon RE-4J School District.  
5 Located in Agate 300 School District.

6 Located in Kiowa C-2 School District.  
7 Located in Elbert 200 School District.  
8 Located in Ellicott 22 School District.  
9 Located in Falcon 49 School District.

## ABOUT OUR STAFF

### School Employment

Each year, your district reports to the Colorado Department of Education on the number of adults who work in your school, as well as the type of work they do. Last year, your school employed:

	Your School		District	
	Full Time	Part Time	Full Time	Part Time
Teachers	2	11	24	11
Paraprofessionals	1	0	6	2
Administrators	0	1	2	1
Other Professionals	0	0	1	1
School Support	0	0	10	9
School Counselors	0	1	2	0
School Librarians	0	1	1	0
<b>Total Staff</b>	16		66	

### Students per Teacher Ratio

	Student Enrollment	Students per Teacher
Grade 6	28	12.8
Grade 7	27	11.6
Grade 8	25	10.8

### Professional Experience of Teachers

	Your School	District
Average years of teaching experience	10	12
Percent of teachers teaching in the subject in which they received their degree	73%	70%
Number of teachers with Masters or Doctoral degrees	3	15
Teachers with 3 years or more of teaching experience	10	28
Teachers with less than 3 years of teaching experience	3	7
Number of professional development days	6	6

### Salaries

	Your School	District	State
Average Teacher Salary	\$37,636	\$38,183	\$47,494
Average Administrator Salary	\$49,342	\$60,633	\$80,444

Principal: Richard Dahl

Number of years as Principal at this school: 3

Number of years as Principal at any school: 5