

SAFETY AND SCHOOL ENVIRONMENT

Non-CSAP Course Offerings

Your School Offers	does	does not
• art.....	<input checked="" type="checkbox"/>	<input type="checkbox"/>
• drama or theater.....	<input type="checkbox"/>	<input checked="" type="checkbox"/>
• music.....	<input checked="" type="checkbox"/>	<input type="checkbox"/>
• physical education.....	<input checked="" type="checkbox"/>	<input type="checkbox"/>
• opportunity for civic or community engagement.....	<input checked="" type="checkbox"/>	<input type="checkbox"/>
• internet safety program.....	<input checked="" type="checkbox"/>	<input type="checkbox"/>
• International Baccalaureate.....	<input type="checkbox"/>	<input checked="" type="checkbox"/>
• extracurricular activities.....	<input checked="" type="checkbox"/>	<input type="checkbox"/>
• athletics.....	<input checked="" type="checkbox"/>	<input type="checkbox"/>
• preschool program.....	<input checked="" type="checkbox"/>	<input type="checkbox"/>
• full-day kindergarten program.....	<input type="checkbox"/>	<input checked="" type="checkbox"/>
• before-and-after-school care program.....	<input type="checkbox"/>	<input checked="" type="checkbox"/>

Safety and Discipline

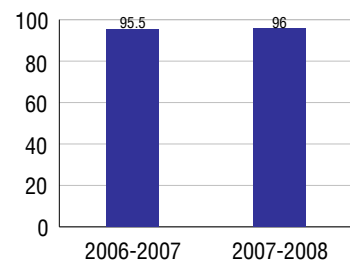
Safe schools are a top priority for parents, teachers, and communities. Your school safety and discipline record for the 2007-2008 school year is:

Type of Incident	Number of Incidents Reported	Percent of Total Incidents
Substance Abuse - Drugs		
Substance Abuse - Alcohol		
Substance Abuse - Tobacco		
Felony Assaults		
Fights		
Possession of Dangerous Weapons		
Other Violations Code of Conduct		

Student Attendance and School Calendar

2007-2008	Your School
Enrollment	171
Average Daily Attendance	164
Student Dropouts	N/A

Attendance Rate



Student Information Over Time

	2005-2006	2006-2007	2007-2008
Student Enrollment Stability	71.1%	81.7%	82.5%
Students Eligible for Free and Reduced Lunch	32.4 %	37.8 %	35.7 %

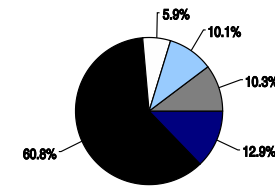
For more information and further details about this report, visit www.state.co.us/schools
 Colorado Department of Education, 201 East Colfax Ave. Denver, CO 80203
Simla Elementary School
 0940/7914/E
 619 Pueblo St. Simla, CO 80835 . 719-541-2291
 10/20/2008

DISTRICT TAXPAYER'S REPORT

Sources of School District Revenue 2007

Local Tax Contribution	\$466,264
State Tax Contribution	2,204,407
Federal Grants	215,400
State Grants	364,977
Private/Partnership Grants	0
Other Discretionary Income	372,689
Total District Operating Revenue	\$3,623,737
Long Term Debt Proceeds	0
Total District Revenue	\$3,623,737
Total District Operating Revenue Per Pupil =	\$12,019
Total District Revenue Per Pupil (Including Long Term Debt) =	\$12,019
District Per Pupil Operating Revenue =	\$8,519
State Average Per Pupil Operating Revenue =	\$6,080

District Source of Funds 2007

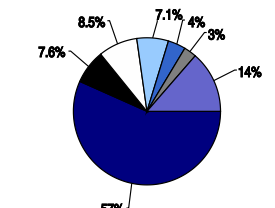


Local Tax Contribution
 State Tax Contribution
 Federal Grants
 State Grants
 Private/Partnership Grants
 Other Discretionary Income
 Long Term Debt Proceeds

District Use of Funds 2007

Instructional & Instructional Support	\$2,249,948
Administration	301,656
Building & Facilities Maintenance	336,686
Operational Expenditures	281,507
Debt Service	149,058
Other Expenditures	109,416
Total District Operating Expenditures	\$3,428,271
Capital Expenditures	544,871
Total District Use of Funds	\$3,973,142

District Use of Funds 2007



Instructional & Instructional Support
 Administration
 Building & Facilities Maintenance
 Operational Expenditures
 Debt Service
 Other Expenditures
 Capital Expenditures

District Debt and Capital Construction & Equipment

Total Outstanding Bonded Debt	\$0
Average Annual Percentage Interest Rate on Debt	4.7%
Amount Raised from Most Recent Bond	\$600,000
Amount Spent on New Buildings During Last 2 Years	\$509,216

Accreditation

Accreditation is Colorado's primary accountability system, incorporating achievement levels, academic growth, achievement gaps, post-secondary readiness, improvement planning, and compliance. The state accredits districts and districts accredit individual schools.

District Accreditation Status for the 2007-2008 school year:

Voter Approved Funding Changes

Your community did /did not hold an election in November 2006

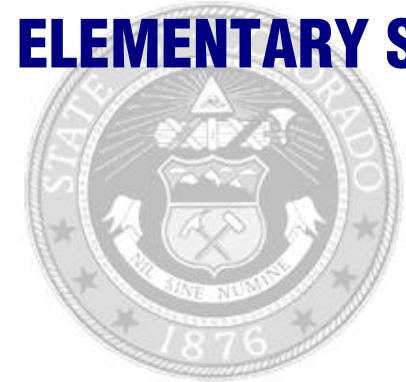
The following items have been approved by voters:

TABOR Override

Bond

Mill Levy Increase

SIMLA ELEMENTARY SCHOOL



BIG SANDY 100J

<http://bigsandy.ppboces.org>

School Accountability Report 2007-2008 School Year

School Performance Summary

Overall Academic Performance on State Assessments **High**

Academic Growth of Students **High**

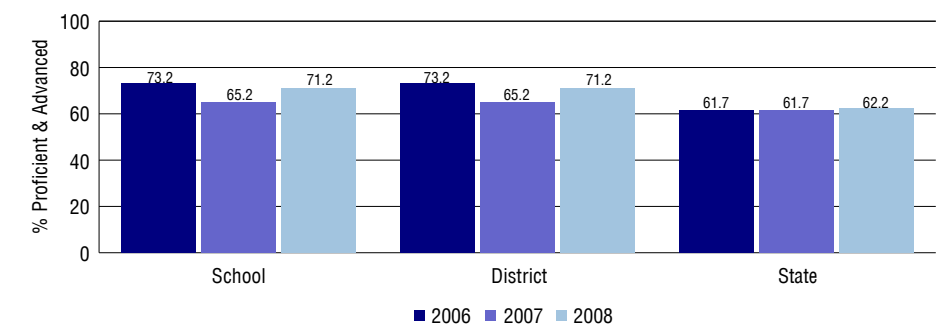
Overall Academic Performance on State Assessments

Each school in the State received a rating of "Excellent", "High", "Average", "Low", or "Unsatisfactory" for student academic performance based on 2007-2008 CSAP and COACT results. The rating is calculated using weighted percentages of each CSAP proficiency level for all content area and grade results for the school, as well as average COACT Reading, Writing, and Math Grade 11 results.

Academic Growth of Students

Each school in the State received a rating of "Low", "Typical", or "High" for student academic growth based on CSAP results. The calculation method is new for 2007-2008. The rating is calculated using student percentile scores matched over two years. More information about the Overall Academic Performance rating and Academic Growth of Students calculations can be found here: http://www.cde.state.co.us/cdeassess/SAR_Info.html.

Percent Proficient and Advanced for Elementary Grades for All Content Areas



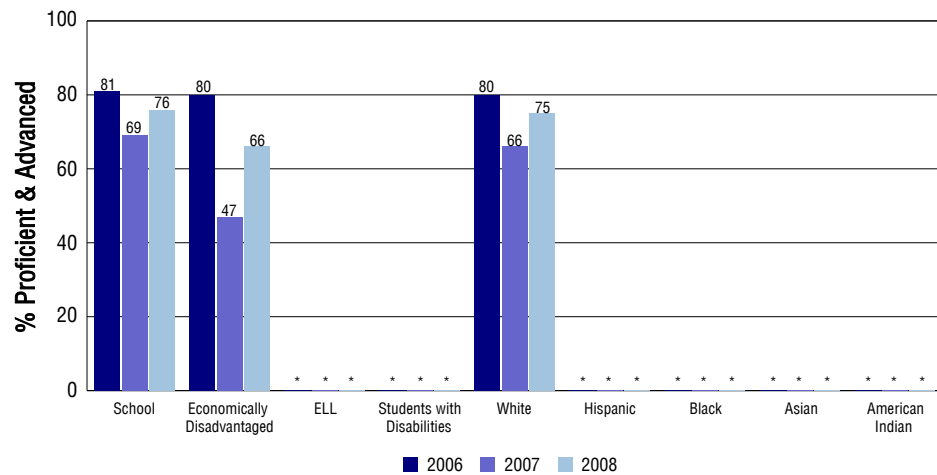
Student Test Scores Used For Calculating Overall Academic Performance

100.0%	Test Scores Counted
0.0%	Test Scores not used due to Language
0.0%	Test Scores not used due to New Student

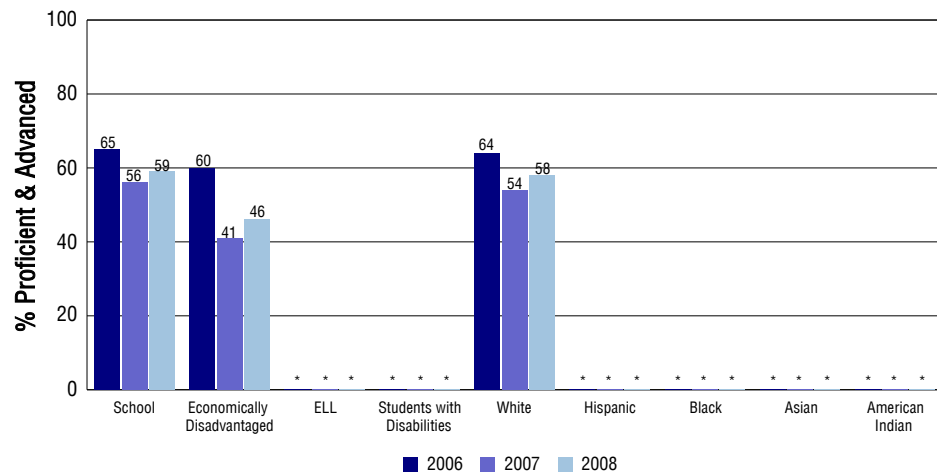
STUDENT PERFORMANCE

These graphs show the percent Proficient and Advanced trends over the past three years for Reading, Writing, and Math. Results are presented for the entire school for all reported grades as well as for different subgroups. Note: * indicates any group with less than 16 student results to be reported.

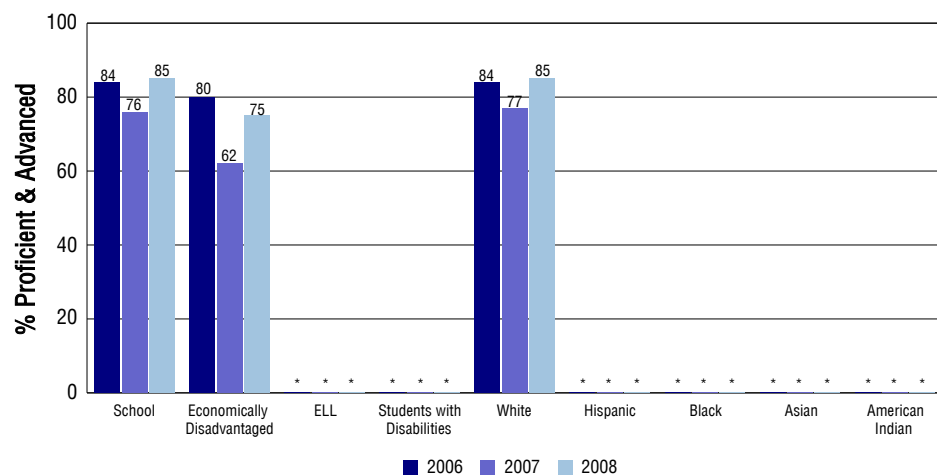
Reading



Writing



Math



SCHOOL INFORMATION

School Pride (as submitted by your district)

- Big Sandy School is committed to having small class sizes.
- Big Sandy School has a variety of extra curricular activities, although, sponsored by community groups, the school is the focal point in helping the community.
- One hundred percent of Big Sandy School's teachers are highly qualified.
- Big Sandy School has a caring environment conducive to increased student motivation and student achievement.

School Goals (as submitted by your district)

Maintain an attendance rate of 95%. Continue to make academic progress for all students as documented by CSAP, ITBS, the Governor's Report Card, and NCLB adequate yearly progress. Continue to use the DIBELS program to assess student growth in kindergarten

No Child Left Behind - Adequate Yearly Progress

Did your school make AYP in reading? Yes Math? Yes
 How many targets does your school have? 12 Met? 12

Based on this school's academic performance, your child may be eligible for one or more of the following; ask your school if your child qualifies for:

Extra academic instruction either before or after-school, or in the summer
 Mentoring

For additional information regarding Adequate Yearly Progress please visit
<http://www.cde.state.co.us/FedPrograms/ayp/index.asp>

How Simla Elementary School Compares To Elementary Schools Within A 75-Mile Radius

School	Program Type	Academic Performance	Academic Growth
Frontier Charter Academy(1)	Charter	High	No Rating
Calhan Elementary School(1)		Average	Typical
Miami/Yoder Elementary School(2)		Average	Typical
Limon Elementary School(3)		High	Typical
Peyton Elementary School(4)		High	Low
Agate Elementary School(5)		High	No Rating
Kiowa Elementary School(6)		Average	Typical
Elbert Elementary School(7)		High	Low
Ellicott Middle School(8)		Low	Low
Ellicott Elementary School(8)		Average	Typical

1 Located in Calhan Rj-1 School District.
 2 Located in Miami/Yoder 60 Jt School District.
 3 Located in Limon RE-4J School District.
 4 Located in Peyton 23 Jt School District.
 5 Located in Agate 300 School District.

6 Located in Kiowa C-2 School District.
 7 Located in Elbert 200 School District.
 8 Located in Ellicott 22 School District.

ABOUT OUR STAFF

School Employment

Each year, your district reports to the Colorado Department of Education on the number of adults who work in your school, as well as the type of work they do. Last year, your school employed:

	Your School		District	
	Full Time	Part Time	Full Time	Part Time
Teachers	9	7	24	11
Paraprofessionals	5	2	6	2
Administrators	0	1	2	1
Other Professionals	0	1	1	1
School Support	0	1	10	9
School Counselors	1	1	2	0
School Librarians	0	1	1	0
Total Staff	28		66	

Students per Teacher Ratio

	Student Enrollment	Students per Teacher
Grade 1	26	11.2
Grade 2	23	9.9
Grade 3	26	11.1
Grade 4	25	12.7
Grade 5	21	16.6

Professional Experience of Teachers

	Your School	District
Average years of teaching experience	15	12
Percent of teachers teaching in the subject in which they received their degree	N/A	N/A
Number of teachers with Masters or Doctoral degrees	9	15
Teachers with 3 years or more of teaching experience	13	28
Teachers with less than 3 years of teaching experience	3	7
Number of professional development days	7	6

Salaries

	Your School	District	State
Average Teacher Salary	\$38,921	\$38,183	\$47,494
Average Administrator Salary	\$54,070	\$60,633	\$80,444

Principal: Greg Mitchell

Number of years as Principal at this school: 20

Number of years as Principal at any school: 20